



10 Aston House Horse Chestnut Close Chesterfield, S40 2FL

£84,950



* SECOND FLOOR APARTMENT * IDEAL FOR FIRST TIME BUYERS OR INVESTORS * ONE DOUBLE BEDROOM * OPEN PLAN LIVING/KITCHEN AREA * BATHROOM WITH WHITE SUITE * INTERCOM SYSTEM * ELECTRIC HEATING * NO UPWARD CHAIN * VACANT POSSESSION

Occupying a highly convenient location, this one bedroomed second floor apartment will undoubtedly appeal to a wide range of buyers to include investors and first time buyers along with those seeking a convenient bolt-hole close to a wide range of amenities and transport facilities.

Boasting a second floor position the property has entrance hall, open plan living/kitchen area with built-in oven and hob along with space and plumbing for washing machine and fridge freezer. The bedroom is of good



Communal Entrance Lobby

With door to front elevation, intercom system and stairs to first floor accommodation

Second Floor Landing

With entrance door leading to No. 10

APARTMENT

Entrance Hall

With entrance door to second floor landing, intercom system and radiator.

Open Plan Lounge/Kitchen Area 15'3" x 12'6" (4.67m x 3.83m)

A good sized living space which has space for lounge furniture along with kitchen/breakfast area which has a range of wall and base cupboard units with worksurfaces over and inset single drainer sink unit with mixer tap. Also having built in electric oven/grill with electric hob and stainless steel extractor canopy over. There is also space and plumbing for washing machine and fridge freezer.

The room also enjoys two double glazed windows and electric wall heater.

Double Bedroom 11'3" x 8'11" (3.43m x 2.74m)

A good sized bedroom with double glazed window and electric wall heater.

'L-Shaped' Bathroom/WC 7'5" x 6'2" (max) (2.28m x 1.89m (max))

Having been fitted with a white suite comprising panelled bath with shower over, pedestal wash basin, low flush w.c., partial ceramic wall tiling, tiled flooring, partial ceramic wall tiling and double glazed window.

Parking

There is one allocated car parking space located in the car park to the rear of the apartment. Visitor car parking spaces are also available.

Tenure

The property is understood to be Leasehold with a 155 year lease from the 1st January 2006.

Further information regarding the Lease is available by the selling agent.

Council Tax Banding

Band A - Chesterfield Borough Council

EPC Rating

Band C

Viewing

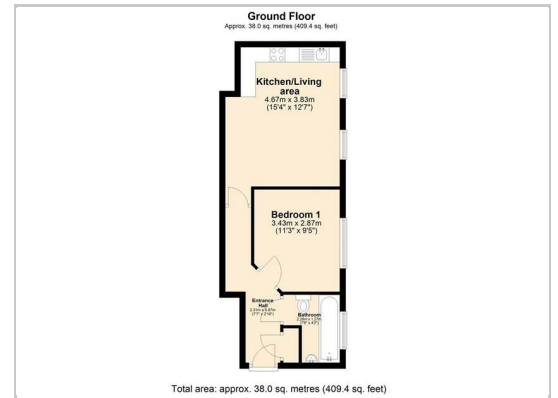
Strictly by appointment with the agents on 01246 232156 / residential@wtparker.com

We can also be contacted via whatsapp on 07935 557082

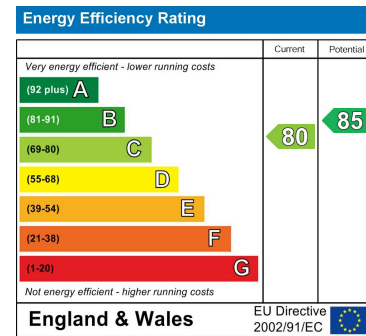
Area Map



Floor Plans



Energy Efficiency Graph



These particulars, whilst believed to be accurate are set out as a general outline only for guidance and do not constitute any part of an offer or contract. Intending purchasers should not rely on them as statements of representation of fact, but must satisfy themselves by inspection or otherwise as to their accuracy. No person in this firm's employment has the authority to make or give any representation or warranty in respect of the property.

4 Glumangate, Chesterfield, S40 1QA

Tel: 01246 232156 Email: residential@wtparker.com <https://www.wtparker.com/>